

EX-SDI



FXR1600P (4MP EX-SDI + EX-SDI + HD-SDI)



FXR Series

Major Features

- 16CH 4MP Half-Time / 1080p Real-Time Recording
- Support POC(Power over Coax) (Model No. FXR1600P)
- 4MP / 2MP / 1.3MP Camera input compatible available
- Upstream Communication Channel supports, Camera OSD control on the DVR.
- Pentaplex Operations (Simultaneous Live, Recording, Playback, Network, Backup).
- Various Playback mode support (Museum, Panorama, Event and Section Repeat Playback).
- Viewer software for SMART PHONE (I-pad, I-phone, Android).
- E-Mail Notification on specific events.
- Free DDNS support.
- Digital zoom in live view & playback.
- E-SATA and SATAII support.
- Gigabit Network.
- Remote Firmware upgrade.
- Dual Streaming support.



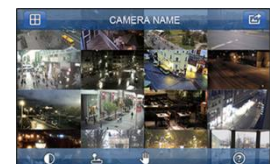
Live Viewer



SMS eMap



Web Viewer



Smart Phone  

PoC (Power over Coax)

PoC Camera



Power with Video through coax cable

PoC DVR





- 4MP EX-SDI 240FPS Recording
- 4K Display

FXR1600P



MODEL		FXR1600P
Performance		PENTAPLEX
Display Speed		Real-Time
Recording Speed	Max. (1440P) 4M	240 fps
	Max. (1080P, 720P)	480 fps
Video In	Channel	16CH (BNC)
	Transmission	EX-TDM, EX-SDI, HD-SDI
	PoC (power over coax)	16ch, Power over Coax, Max. 22W/ch
Video Out	Main Display	HDMI / VGA / Composite
	Main Display Resolution	3840x2160(p), 1920x1080 (P), 1440x900(P), 12801024(P) ,1280x720 (P) 1024x768(P)
	SPOT	HD-SDI SPOT (BNC)
Audio	Input / output	16/1 (RCA)
Alarm	Input / output	8/4
UCC(Upstream Communication Channel)		16

Details

Screen	Display Split	1,4,7,9,10,13,16
	Interface	Graphic User Interface
Video	Codec	H.264
	Image Quality	4 Levels (Low / Normal / High / Highest)
	Recording type	Schedule / Continuous / Event (Motion)
Storage	Interface type	SATA 3.0
	HDD	Up to 5 HDD's
	e-SATA	1 e-SATA
Connectors	USB port	USB 2.0 2 PORT (Front)

Function

Live Display	OSD	On / Off
	Border Color / Digital Zoom	Selectable / Up to 4X
	Cameo	Camera position change / Freeze / Audio on
Motion	Area	Adjustable GRID (16 X 12)
	Sensitivity	5 Level motion detection
System	Hidden Video	Video is hidden in Live view but it is recorded
	PTZ	Supported recent PTZ camera protocol / Preset up to 255 / RS 485
	Private Zone	Block the private zone in live camera view
	Auto Time Synch	By NTP(Network Time Protocol)
	Firmware Update	Via USB / Network
Event	SMART HDD	Auto Detect & Monitoring HDD's problem
	Source	Motion / Alarm IN / Video loss
	Action	Recording, e-Mail, Log file, Send message to Remote, Buzzer, Pop Up Window, PTZ preset
Search	Pre/Post REC	Yes (Up to 10 sec / Up to 100 sec)
	Speed	x1, x2, x4, x8, x16
	Quick / Event search	Search by time with calendar / Search by event
	Repeat search	Select specific time period and playback repeatedly
	Panorama search	Frame by frame
	Smart search	Search only specific selected area
Backup	CAMEO	Live monitoring during playback, Playback camera change, Freeze and Digital zoom
	File format	DVR Format
Network	Media	USB / DVD
	Protocol	Static IP, DHCP, DDNS
	Physical / Mac Layer	RJ45 (10/100 /1000 Mbps), Ethernet
	Browser	AVMS, Web Viewer, Smart Phone Viewer (Android, I-phone)

Environment

Operating Temperature / Humidity	0~40°C / 20~80% RH
Dimension / Weight	430(W) X 443(D) X 88(H) / 8Kg (without HDD)
Power Requirement / Consumption	AC 100V~220V (50Hz-60Hz) / 200W
PoC Power	DC 48V / 3.75A



QHD EX-SDI DVR (4MP EX-SDI + EX-SDI + HD-SDI)

EX-SDI 16CH 4MP Half-Time Recording(240FPS)
1080p Real-Time Recording (480FPS)



FXR Series

Major Features

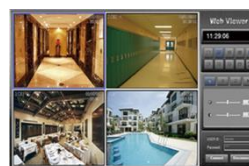
- 16CH 4MP Half-Time Recording. 1080p Real-Time Recording
- 4MP / 2MP / 1.3MP Camera input compatible available
- Upstream Communication Channel supports, Camera OSD control on the DVR.
- Pentaplex Operations (Simultaneous Live, Recording, Playback, Network, Backup).
- Various Playback mode support (Museum, Panorama, Event and Section Repeat Playback).
- Viewer software for SMART PHONE (I-pad, I-phone, Android).
- E-Mail Notification on specific events.
- Free DDNS support.
- Digital zoom in live view & playback.
- E-SATA and SATAII support.
- Gigabit Network.
- Remote Firmware upgrade.
- Dual Streaming support.



Live Viewer



SMS eMap



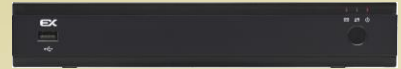
Web Viewer



Smart Phone  



FXR800/400



FXR1600



- 4MP EX-SDI 240FPS Recording
- 4K Display

Model		FXR-1600	FXR-800	FXR-400
Performance		PENTAPLEX		
Display Speed		Real-Time		
Recording Speed	Max. (1440P) 4M	240 fps	120 fps	120 fps
	Max. (1080P, 720P)	480 fps	240 fps	120 fps
Video In	Channel	16CH (BNC)	8CH (BNC)	4CH (BNC)
	Transmission	EX-4M, EX-TDM, EX-SDI, HD-SDI		
	Analog HD Compatibility	X		HD-CVI, HD-TVI, AHD
Video Out	Main Display	HDMI / VGA / Composite		
	Main Display Resolution	3840x2160(p), 1920x1080 (P), 1440x900(P), 1280X 1024(P), 1280x720(P), 1024x768(P)	3840x2160(p), 2560X1440(p), 1920x1080 (P), 1600x1200(P), 1440x900(P), 1280X 1024(P) , 1280x720(P), 1024x768(P)	
	SPOT	HD-SDI 1CH (BNC)	Analog 1CH (RCA)	Analog 1CH (RCA)
Audio	Input / output	16/1 (RCA)	8/1 (RCA)	4/1 (RCA)
Alarm	Input / output	8/4	4/1	4/1
UCC(Upstream Communication Channel)		16	8	4

Details

Screen	Display Split	1,4,7,9,10,13,16		
	Interface	Graphic User Interface		
Video	Codec	H.264		
	Image Quality	4 Levels (Low / Normal / High / Highest)		
	Recording type	Schedule / Continuous / Event (Motion)		
Storage	Interface type	SATA 3.0		
	HDD	Up to 5 HDD's	Up to 1 HDD's	Up to 1 HDD's
	e-SATA	1 e-SATA	1 e-SATA	Not supported
Connectors	USB port	USB 2.0 2 PORT (Front)	USB 2.0 2 PORT (Front 1, Rear : 1)	USB 2.0 2 PORT (Front 1, Rear : 1)

Function

Live Display	OSD	On / Off		
	Border Color / Digital Zoom	Selectable / Up to 4X		
	Cameo	Camera position change / Freeze / Audio on		
Motion	Area	Adjustable GRID (16 X 12)		
	Sensitivity	5 Level motion detection		
System	Hidden Video	Video is hidden in Live view but it is recorded		
	PTZ	Supported recent PTZ camera protocol / Preset up to 255 / RS 485		
	Private Zone	Block the private zone in live camera view		
	Auto Time Synch	By NTP(Network Time Protocol)		
	Firmware Update	Via USB / Network		
Event	SMART HDD	Auto Detect & Monitoring HDD's problem		
	Source	Motion / Alarm IN / Video loss		
	Action	Recording, e-Mail, Log file, Send message to Remote, Buzzer, Pop Up Window, PTZ preset		
Search	Pre/Post REC	Yes (Up to 10 sec / Up to 100 sec)		
	Speed	x1, x2, x4, x8, x16		
	Quick / Event search	Search by time with calendar / Search by event		
	Repeat search	Select specific time period and playback repeatedly		
	Panorama search	Frame by frame		
	Smart search	Search only specific selected area		
Backup	CAMEO	Live monitoring during playback, Playback camera change, Freeze and Digital zoom		
	File format	DVR Format		
	Media	USB / DVD	USB	
Network	Protocol	Static IP, DHCP, DDNS		
	Physical / Mac Layer	RJ45 (10/100 /1000 Mbps), Ethernet		
	Browser	SMS, Web Viewer, Smart Phone Viewer (Android, I-phone)		

Environment

Operating Temperature / Humidity		0~40°C / 20~80% RH		
Dimension / Weight		430(W) X 443(D) X 88(H) / 8Kg (without HDD)	1U case : 260(W) X 237(D) X 44(H) / 1.2 Kg (without HDD)	
Power Requirement / Consumption		AC 100V~220V (50Hz-60Hz) / 200W	1U case : AC 100V~220V (50Hz-60Hz) / Adaptor 36W	